

18888888888888888888

INSTR # 5033177

OR BK 03345 PG 0027

RECORDED 01/03/01 09:51 AM
CHARLE GREEN CLERK OF COURT
LEE COUNTY
RECORDING FEE: \$0.00
DEPUTY CLERK K Carter/Light

Prepared By and To Be Returned To:
ROBERT S. FRIEDMAN, ESQUIRE
CARLTON, FIELDS, WARD, EMMANUEL,
SMITH & CUTLER, P.A.
Post Office Box 3238
Tampa, Florida 33601-3238

**THIRD SUPPLEMENT TO DECLARATION OF CONDOMINIUM
FOR COURTSIDE LANDINGS CONDOMINIUM**

WHEREAS, the Declaration of Condominium for Courtside Landings Condominium was recorded on March 24, 1999, in Official Records Book 3093, Page 3733, and which references the Condominium drawings recorded in Condominium Book 26, Pages 57 and 58, all of the public records of Lee County, Florida (the "Declaration"); and

WHEREAS, the First Supplement to the Declaration was recorded on September 29, 1999, in Official Records Book 3170, Page 2965, and which references the condominium drawings recorded in Condominium Book 27, Page 7-10, all of the public records of Lee County, Florida; and

WHEREAS, the Second Supplement to the Declaration was recorded on December 21, 2000, in Official Records Book 3342, Page 474, and which references the condominium drawings recorded in Condominium Book 29, Page 45-46, all of the public records of Lee County, Florida; and

WHEREAS, there are unit(s) of Courtside Landings Condominium which are now substantially complete and which are ready for conveyancing pursuant to Section 718.104(4)(e), Florida Statutes;

NOW, THEREFORE, the Declaration is hereby further amended by the condominium drawings recorded in Condominium Book 0029, Page 0052, of the public records of Lee County, Florida, of which a reduced-in-size copy is attached hereto as Exhibit 1 and incorporated herein by reference.

21st IN WITNESS WHEREOF, this instrument was executed by the undersigned this day of December, 2000.

WITNESSES:

Name: Carri A. Rupp
Print Name: Carri A. Rupp

Name: Mary S. Cook
Print Name: Mary S. Cook

DEVELOPER:

WCI COMMUNITIES, INC., a Delaware corporation, f/k/a Florida Design Communities, Inc., as Developer of Courtside Landings Condominium

By: Stephen C. Pierce
Stephen C. Pierce, Vice President

(SEAL)

STATE OF FLORIDA
COUNTY OF LEE

The foregoing instrument was acknowledged before me this 21st day of December, 2000, by Stephen C. Pierce, as Vice President of WCI COMMUNITIES, INC., a Delaware corporation, formerly known as Florida Design Communities, Inc., on behalf of the corporation, as Developer of Courtside Landings Condominium. He is personally known to me.

My Commission Expires: 3/6/04

(AFFIX NOTARY SEAL)

Mary S. Cook
(Signature)

Name: Mary S. Cook
(Legibly Printed)

Notary Public, State of Florida

CC 9110338
(Commission Number, if any)



Mary S. Cook
Commission # CC 9110338
Expires March 6, 2004
Bonded Title
Atlantic Bonding Co., Inc.

LEGAL DESCRIPTION OF PHASE I OF COURTSIDE LANDINGS CONDOMINIUM

A parcel of land lying in Section 6, Township 43 South, Range 23 East, Lee County, Florida, comprised of three parcels as follows:

Parcel A-2

The North 415.00 feet of the East 565.71 feet of the West 1697.13 feet of the North 830.00 feet of the South 1660.00 feet of Section 6, Township 43 South, Range 23 East, Lee County, Florida.

Parcel A-3

The North 415.00 feet of the East 565.71 feet of the West 2262.84 feet of the North 830.00 feet of the South 1660.00 feet of Section 6, Township 43 South, Range 23 East, Lee County, Florida.

Parcel L

The North 830.00 feet of the West 1131.43 feet of the South 1660.00 feet of Section 6, Township 43 South, Range 23 East, Lee County, Florida.

More particularly described as follows:

Commencing at the Southwest corner of Section 6, Township 43 South, Range 23 East, thence run along the West line of aforesaid Section 6, N 00°33'37" E a distance of 830.60 feet to the Southwest corner of the aforementioned Parcel L also being the Point of Beginning; thence continue along the West line of aforesaid Section 6, N 00°33'37" E a distance of 830.60 feet also being the West line of Parcel L to the North line of the South 1660 feet of the aforesaid Section 6; thence run N 88°22'02" E a distance of 2264.49 feet along the North line of the South 1660 feet of the aforesaid Section 6, also being the North line of the aforementioned Parcels L, A-2 and A-3 to the Northeast corner of Parcel A-3. thence run S 00°33'37" W a distance of 415.30 feet along the East line of Parcel A-3 to the Southeast corner of Parcel A-3; thence run S 88°22'02" W for a distance of 1132.24 feet to the Southwest corner of Parcel A-2 also being on the East line of Parcel L; thence run S 00°33'37" W for a distance of 415.30 feet along the East line of Parcel L to the Southeast corner of Parcel L, thence run S 88°22'02" W for a distance of 1132.25 feet along the South line of Parcel L to the Point of Beginning.

THIS LEGAL DESCRIPTION IS PROVIDED FOR THE SAKE OF CLARITY.

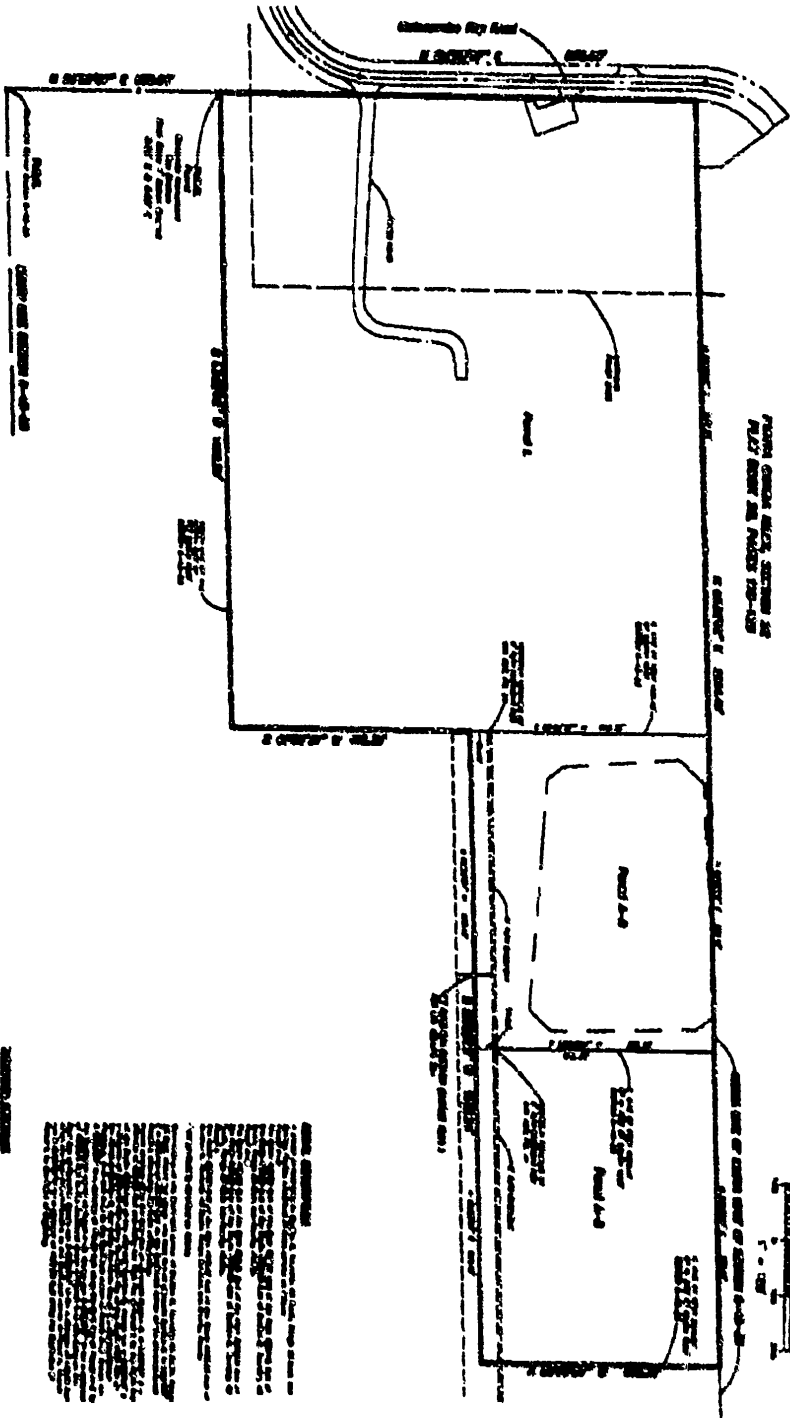
EXHIBIT 1
Page 1 of 1



COURTSIDE LANDINGS CONDOMINIUM

SECTION 9, TWP 49 N, RGE 20 E
1/4 CORNER, FLORIDA

CONDOMINIUM PLAN BOOK PAGE 10
SHEET 1 OF 2 (CON) C-51



THIS PLAN, SPECIFICATIONS AND NOTES SHALL BE READ IN CONJUNCTION WITH THE CONDOMINIUM ACT, CHAPTER 718, F.S.

SCALE: 1/8" = 1'-0"



SECTION 9, TWP 49 N, RGE 20 E

1. ALL DIMENSIONS ARE TO FACE UNLESS OTHERWISE NOTED.
2. FINISHES ARE AS SHOWN ON THE FINISH SCHEDULE.
3. SEE NOTES ON SHEET 1 OF 2 (CON) FOR FINISHES.
4. SEE NOTES ON SHEET 2 OF 2 (CON) FOR FINISHES.
5. SEE NOTES ON SHEET 3 OF 2 (CON) FOR FINISHES.
6. SEE NOTES ON SHEET 4 OF 2 (CON) FOR FINISHES.
7. SEE NOTES ON SHEET 5 OF 2 (CON) FOR FINISHES.
8. SEE NOTES ON SHEET 6 OF 2 (CON) FOR FINISHES.
9. SEE NOTES ON SHEET 7 OF 2 (CON) FOR FINISHES.
10. SEE NOTES ON SHEET 8 OF 2 (CON) FOR FINISHES.
11. SEE NOTES ON SHEET 9 OF 2 (CON) FOR FINISHES.
12. SEE NOTES ON SHEET 10 OF 2 (CON) FOR FINISHES.
13. SEE NOTES ON SHEET 11 OF 2 (CON) FOR FINISHES.
14. SEE NOTES ON SHEET 12 OF 2 (CON) FOR FINISHES.
15. SEE NOTES ON SHEET 13 OF 2 (CON) FOR FINISHES.
16. SEE NOTES ON SHEET 14 OF 2 (CON) FOR FINISHES.
17. SEE NOTES ON SHEET 15 OF 2 (CON) FOR FINISHES.
18. SEE NOTES ON SHEET 16 OF 2 (CON) FOR FINISHES.
19. SEE NOTES ON SHEET 17 OF 2 (CON) FOR FINISHES.
20. SEE NOTES ON SHEET 18 OF 2 (CON) FOR FINISHES.
21. SEE NOTES ON SHEET 19 OF 2 (CON) FOR FINISHES.
22. SEE NOTES ON SHEET 20 OF 2 (CON) FOR FINISHES.
23. SEE NOTES ON SHEET 21 OF 2 (CON) FOR FINISHES.
24. SEE NOTES ON SHEET 22 OF 2 (CON) FOR FINISHES.
25. SEE NOTES ON SHEET 23 OF 2 (CON) FOR FINISHES.
26. SEE NOTES ON SHEET 24 OF 2 (CON) FOR FINISHES.
27. SEE NOTES ON SHEET 25 OF 2 (CON) FOR FINISHES.
28. SEE NOTES ON SHEET 26 OF 2 (CON) FOR FINISHES.
29. SEE NOTES ON SHEET 27 OF 2 (CON) FOR FINISHES.
30. SEE NOTES ON SHEET 28 OF 2 (CON) FOR FINISHES.
31. SEE NOTES ON SHEET 29 OF 2 (CON) FOR FINISHES.
32. SEE NOTES ON SHEET 30 OF 2 (CON) FOR FINISHES.
33. SEE NOTES ON SHEET 31 OF 2 (CON) FOR FINISHES.
34. SEE NOTES ON SHEET 32 OF 2 (CON) FOR FINISHES.
35. SEE NOTES ON SHEET 33 OF 2 (CON) FOR FINISHES.
36. SEE NOTES ON SHEET 34 OF 2 (CON) FOR FINISHES.
37. SEE NOTES ON SHEET 35 OF 2 (CON) FOR FINISHES.
38. SEE NOTES ON SHEET 36 OF 2 (CON) FOR FINISHES.
39. SEE NOTES ON SHEET 37 OF 2 (CON) FOR FINISHES.
40. SEE NOTES ON SHEET 38 OF 2 (CON) FOR FINISHES.
41. SEE NOTES ON SHEET 39 OF 2 (CON) FOR FINISHES.
42. SEE NOTES ON SHEET 40 OF 2 (CON) FOR FINISHES.
43. SEE NOTES ON SHEET 41 OF 2 (CON) FOR FINISHES.
44. SEE NOTES ON SHEET 42 OF 2 (CON) FOR FINISHES.
45. SEE NOTES ON SHEET 43 OF 2 (CON) FOR FINISHES.
46. SEE NOTES ON SHEET 44 OF 2 (CON) FOR FINISHES.
47. SEE NOTES ON SHEET 45 OF 2 (CON) FOR FINISHES.
48. SEE NOTES ON SHEET 46 OF 2 (CON) FOR FINISHES.
49. SEE NOTES ON SHEET 47 OF 2 (CON) FOR FINISHES.
50. SEE NOTES ON SHEET 48 OF 2 (CON) FOR FINISHES.
51. SEE NOTES ON SHEET 49 OF 2 (CON) FOR FINISHES.
52. SEE NOTES ON SHEET 50 OF 2 (CON) FOR FINISHES.
53. SEE NOTES ON SHEET 51 OF 2 (CON) FOR FINISHES.
54. SEE NOTES ON SHEET 52 OF 2 (CON) FOR FINISHES.
55. SEE NOTES ON SHEET 53 OF 2 (CON) FOR FINISHES.
56. SEE NOTES ON SHEET 54 OF 2 (CON) FOR FINISHES.
57. SEE NOTES ON SHEET 55 OF 2 (CON) FOR FINISHES.
58. SEE NOTES ON SHEET 56 OF 2 (CON) FOR FINISHES.
59. SEE NOTES ON SHEET 57 OF 2 (CON) FOR FINISHES.
60. SEE NOTES ON SHEET 58 OF 2 (CON) FOR FINISHES.
61. SEE NOTES ON SHEET 59 OF 2 (CON) FOR FINISHES.
62. SEE NOTES ON SHEET 60 OF 2 (CON) FOR FINISHES.
63. SEE NOTES ON SHEET 61 OF 2 (CON) FOR FINISHES.
64. SEE NOTES ON SHEET 62 OF 2 (CON) FOR FINISHES.
65. SEE NOTES ON SHEET 63 OF 2 (CON) FOR FINISHES.
66. SEE NOTES ON SHEET 64 OF 2 (CON) FOR FINISHES.
67. SEE NOTES ON SHEET 65 OF 2 (CON) FOR FINISHES.
68. SEE NOTES ON SHEET 66 OF 2 (CON) FOR FINISHES.
69. SEE NOTES ON SHEET 67 OF 2 (CON) FOR FINISHES.
70. SEE NOTES ON SHEET 68 OF 2 (CON) FOR FINISHES.
71. SEE NOTES ON SHEET 69 OF 2 (CON) FOR FINISHES.
72. SEE NOTES ON SHEET 70 OF 2 (CON) FOR FINISHES.
73. SEE NOTES ON SHEET 71 OF 2 (CON) FOR FINISHES.
74. SEE NOTES ON SHEET 72 OF 2 (CON) FOR FINISHES.
75. SEE NOTES ON SHEET 73 OF 2 (CON) FOR FINISHES.
76. SEE NOTES ON SHEET 74 OF 2 (CON) FOR FINISHES.
77. SEE NOTES ON SHEET 75 OF 2 (CON) FOR FINISHES.
78. SEE NOTES ON SHEET 76 OF 2 (CON) FOR FINISHES.
79. SEE NOTES ON SHEET 77 OF 2 (CON) FOR FINISHES.
80. SEE NOTES ON SHEET 78 OF 2 (CON) FOR FINISHES.
81. SEE NOTES ON SHEET 79 OF 2 (CON) FOR FINISHES.
82. SEE NOTES ON SHEET 80 OF 2 (CON) FOR FINISHES.
83. SEE NOTES ON SHEET 81 OF 2 (CON) FOR FINISHES.
84. SEE NOTES ON SHEET 82 OF 2 (CON) FOR FINISHES.
85. SEE NOTES ON SHEET 83 OF 2 (CON) FOR FINISHES.
86. SEE NOTES ON SHEET 84 OF 2 (CON) FOR FINISHES.
87. SEE NOTES ON SHEET 85 OF 2 (CON) FOR FINISHES.
88. SEE NOTES ON SHEET 86 OF 2 (CON) FOR FINISHES.
89. SEE NOTES ON SHEET 87 OF 2 (CON) FOR FINISHES.
90. SEE NOTES ON SHEET 88 OF 2 (CON) FOR FINISHES.
91. SEE NOTES ON SHEET 89 OF 2 (CON) FOR FINISHES.
92. SEE NOTES ON SHEET 90 OF 2 (CON) FOR FINISHES.
93. SEE NOTES ON SHEET 91 OF 2 (CON) FOR FINISHES.
94. SEE NOTES ON SHEET 92 OF 2 (CON) FOR FINISHES.
95. SEE NOTES ON SHEET 93 OF 2 (CON) FOR FINISHES.
96. SEE NOTES ON SHEET 94 OF 2 (CON) FOR FINISHES.
97. SEE NOTES ON SHEET 95 OF 2 (CON) FOR FINISHES.
98. SEE NOTES ON SHEET 96 OF 2 (CON) FOR FINISHES.
99. SEE NOTES ON SHEET 97 OF 2 (CON) FOR FINISHES.
100. SEE NOTES ON SHEET 98 OF 2 (CON) FOR FINISHES.
101. SEE NOTES ON SHEET 99 OF 2 (CON) FOR FINISHES.
102. SEE NOTES ON SHEET 100 OF 2 (CON) FOR FINISHES.

UNITY OF CONDOMINIUM ACT

DATE: 12/20/2000

10/10/2000

[Handwritten signature]
DATE: 12/20/2000

